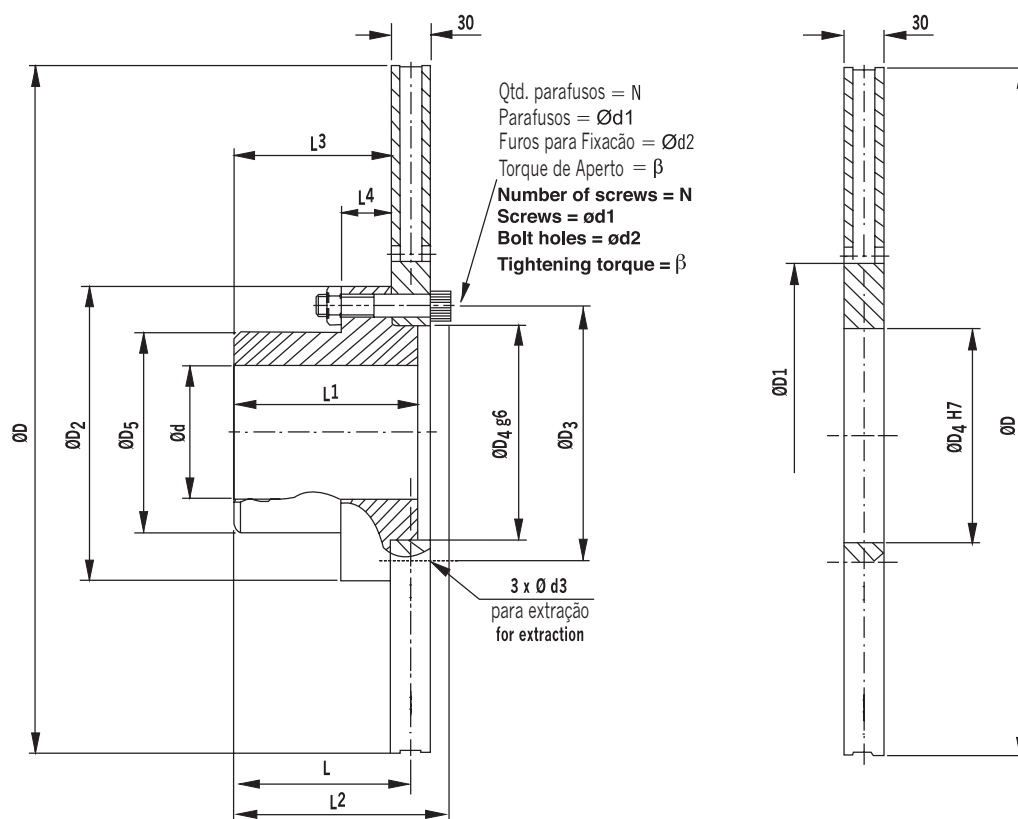


Discos Autoventilados - Espessura 30 mm

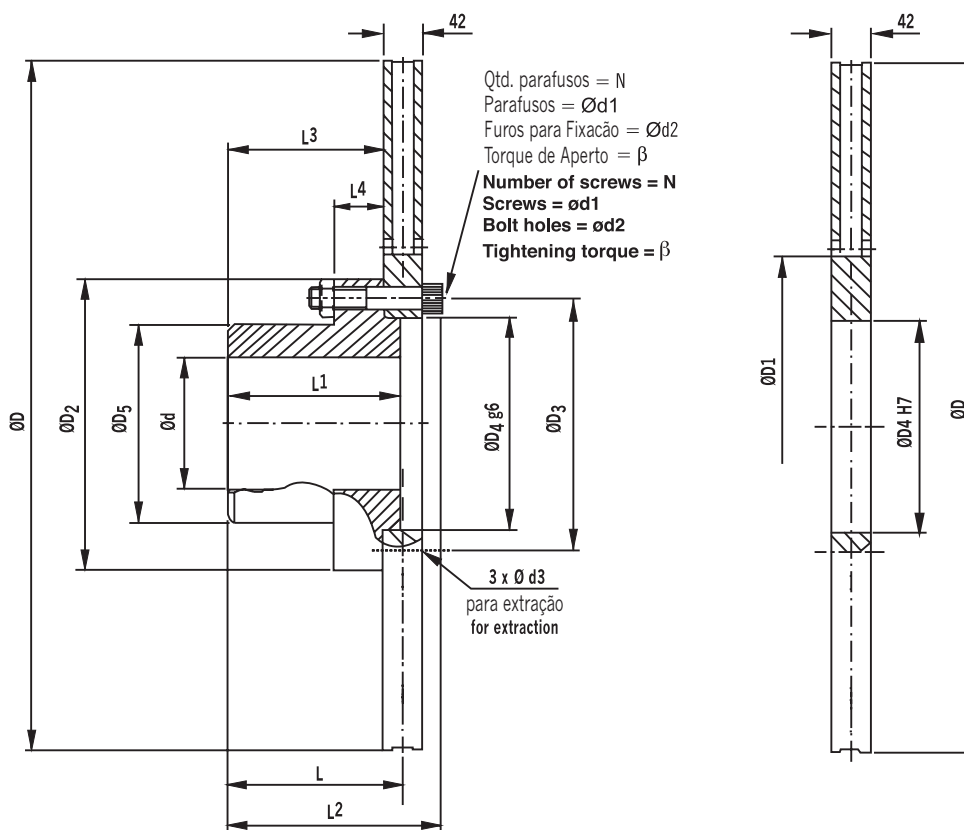
Self-ventilated Discs - 30 mm Thickness



Modelos / Models		315 V 30	355 V 30	395 V 30	445 V 30	495 V 30	550 V 30	625 V 30	705 V 30	795 V 30
Inércia / Inertia [kgm ²]	Com Cubo / With Hub	0,13	0,22	0,35	0,54	0,88	1,29	2,15	3,56	6,00
	Sem Cubo / Without Hub	0,12	0,20	0,32	0,50	0,77	1,18	2,01	3,32	5,58
Peso / Weight [kgf]	Com Cubo / With Hub	16	21	27	34	49	56	69	92	122
	Sem Cubo / Without Hub	10	13	17	20	24	31	42	56	73
Rotação Máx. [rpm] / Max. Speed [rpm]		3.000	2.700	2.400	2.100	1.900	1.800	1.500	1.300	1.200
ØD		315	355	395	445	495	550	625	705	795
ØD1		139	172	177	184	230	275	343	418	498
ØD2		125	145	165	175	220	220	235	265	300
ØD3		105	125	140	146	190	190	205	230	260
ØD4		85	105	115	120	160	160	170	195	220
ØD5		80	95	105	110	150	150	150	180	210
L		102	102	102	135	135	135	135	135	135
L1		107	107	107	140	140	140	140	140	140
L3		127	129	131	166	168	168	170	172	174
L4		87	87	87	120	120	120	120	120	120
N		28	28	28	30	38	38	38	40	40
Ød		9	9	9	12	12	12	12	12	12
Ød1		0-50	0-60	0-70	0-70	0-100	0-100	0-100	0-120	0-130
Ød1		10	12	14	16	18	18	20	22	24
Ød2		11	13	15	17	19	19	21	23	25
Ød3		M10	M12	M14	M16	M18	M18	M20	M22	M24
Torque de Aperto β / Tightening Torque β [Nm]		50		140	210	290	290	410	550	710

Discos Autoventilados - Espessura 42 mm

Self-ventilated Discs - 42 mm Thickness



Modelos / Models		625 V 42	705 V 42	795 V 42	995 V 42
Inércia / Inertia [kgm ²]	Com Cubo / With Hub	3,77	6,05	10,45	25,63
	Sem Cubo / Without Hub	3,36	5,64	9,19	24,37
Peso / Weight [kgf]	Com Cubo / With Hub	107	132	204	286
	Sem Cubo / Without Hub	60	85	105	187
Rotação Máx. [rpm] / Max. Speed [rpm]		1.500	1.300	1.200	900
	$\varnothing D$	625	705	795	995
	$\varnothing D_1$	302	418	486	694
	$\varnothing D_2$	300	300	380	380
	$\varnothing D_3$	260	260	330	330
	$\varnothing D_4$	220	220	280	280
	$\varnothing D_5$	210	210	260	260
	L	141	141	181	181
	L1	140	140	180	180
	L2	186	186	232	232
	L3	120	120	160	160
	L4	40	40	40	40
	N	12	12	12	12
	$\varnothing d$	40 · 140	40 · 140	40 · 180	40 · 180
	$\varnothing d_1$	24	24	30	30
	$\varnothing d_2$	25	25	31	31
	$\varnothing d_3$	M24	M24	M30	M30
Torque de Aperto β / Tightening Torque β [Nm]		710	710	1.450	1.450